

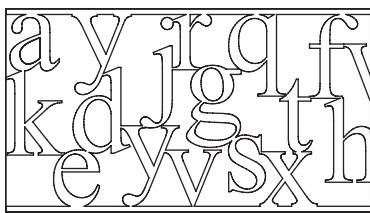
▲ TYPOGRAPHY TABLE



▲ TABLE DESIGN

Made up of a 450mmx300mm typography stool and a 700mmx390mm coffee table this series came about through an exploration of typography as a structural form. Designed and hand made by LifeSpaceJourney from 3mm laser cut steel sheet, this series is available in Dulux powder coat finish.





700

▼
390
▲

